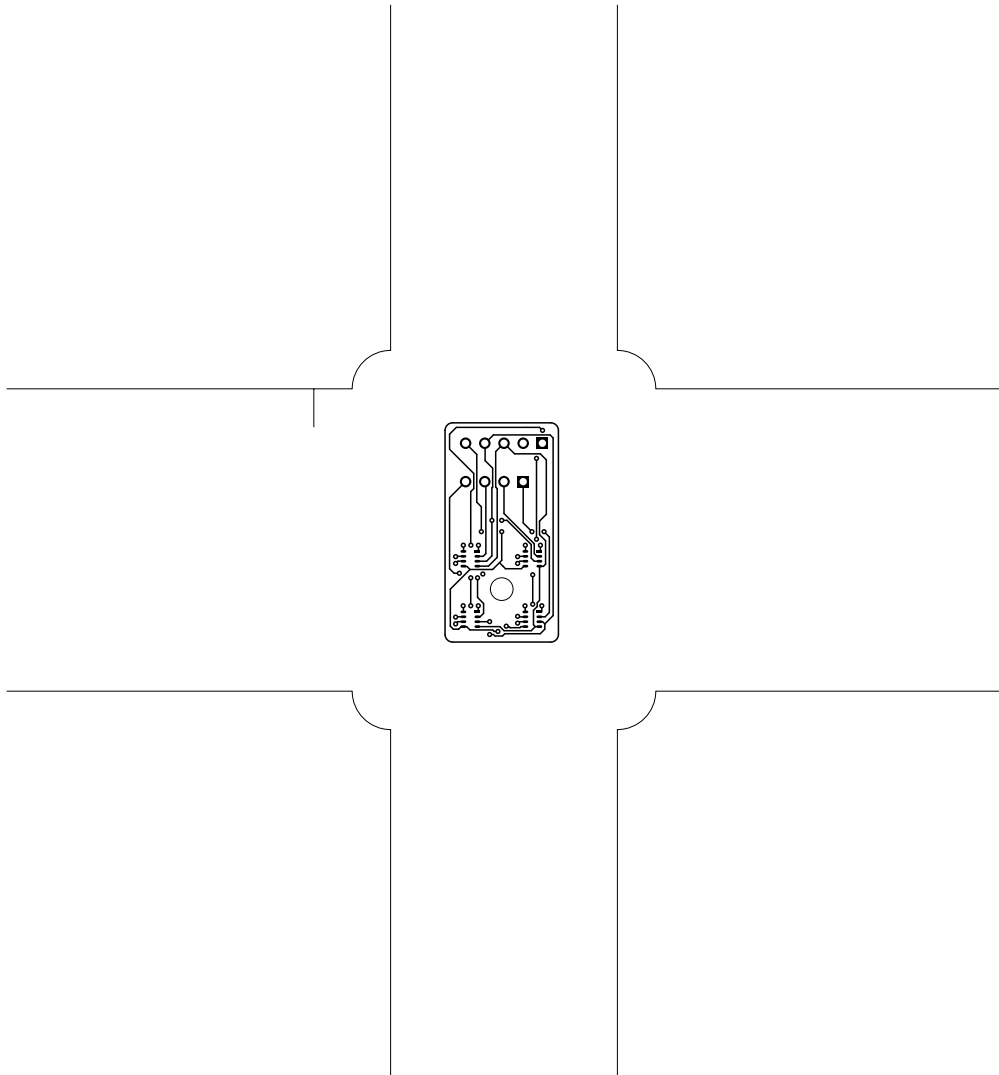
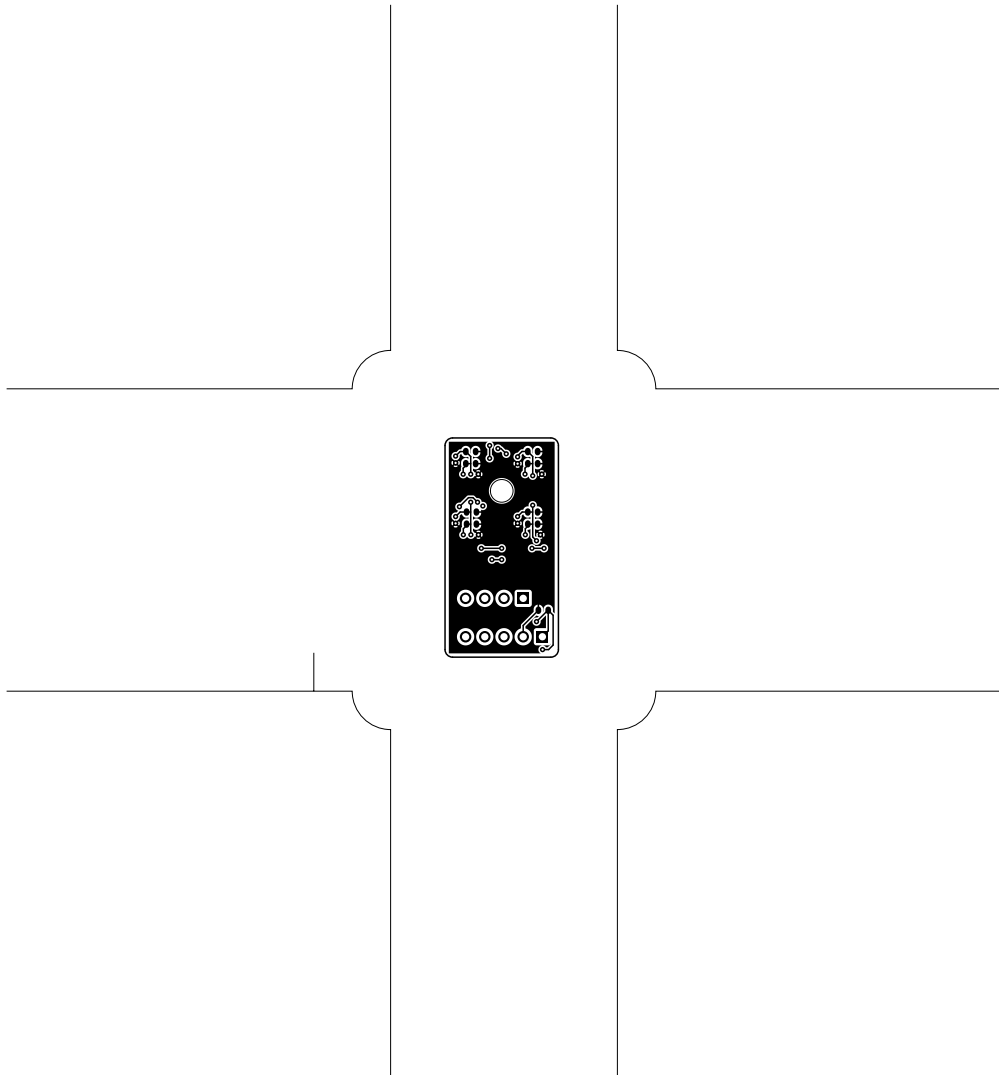
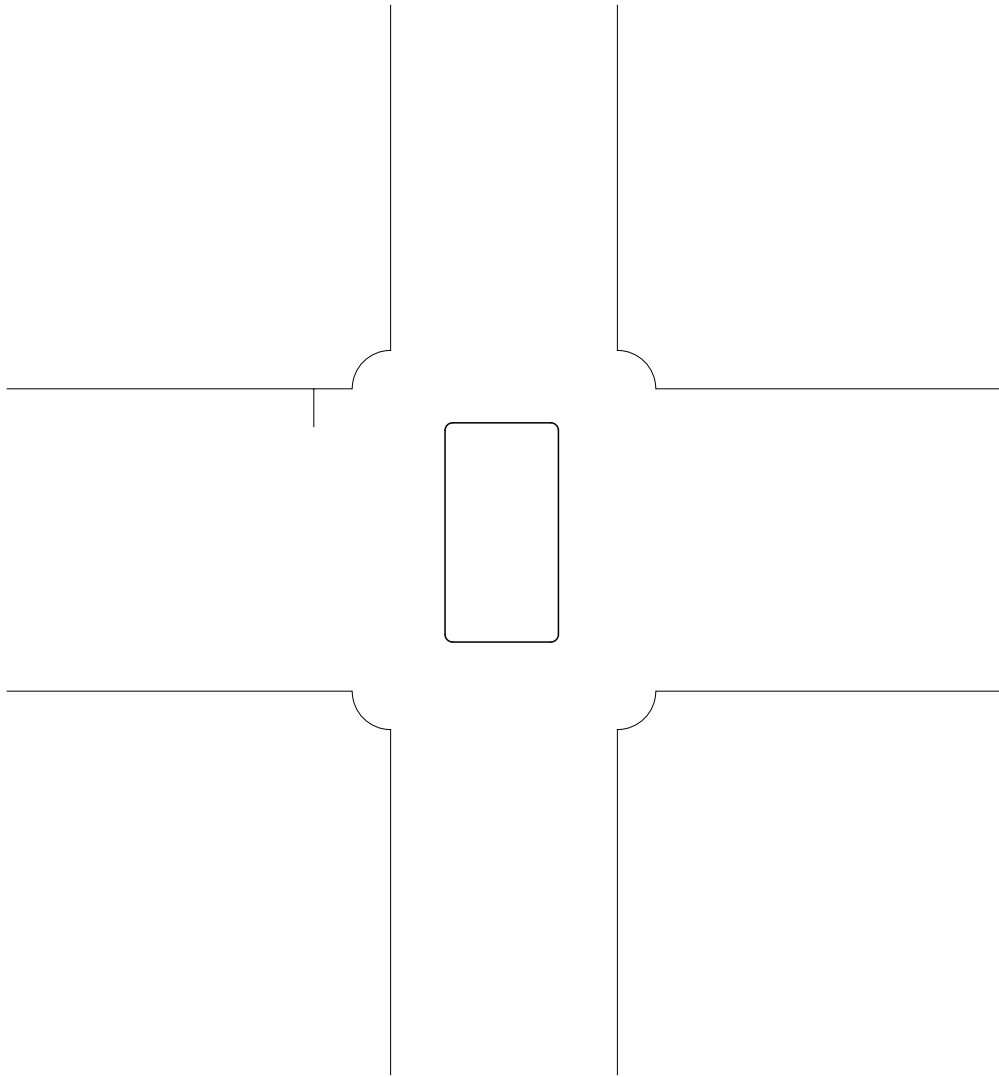


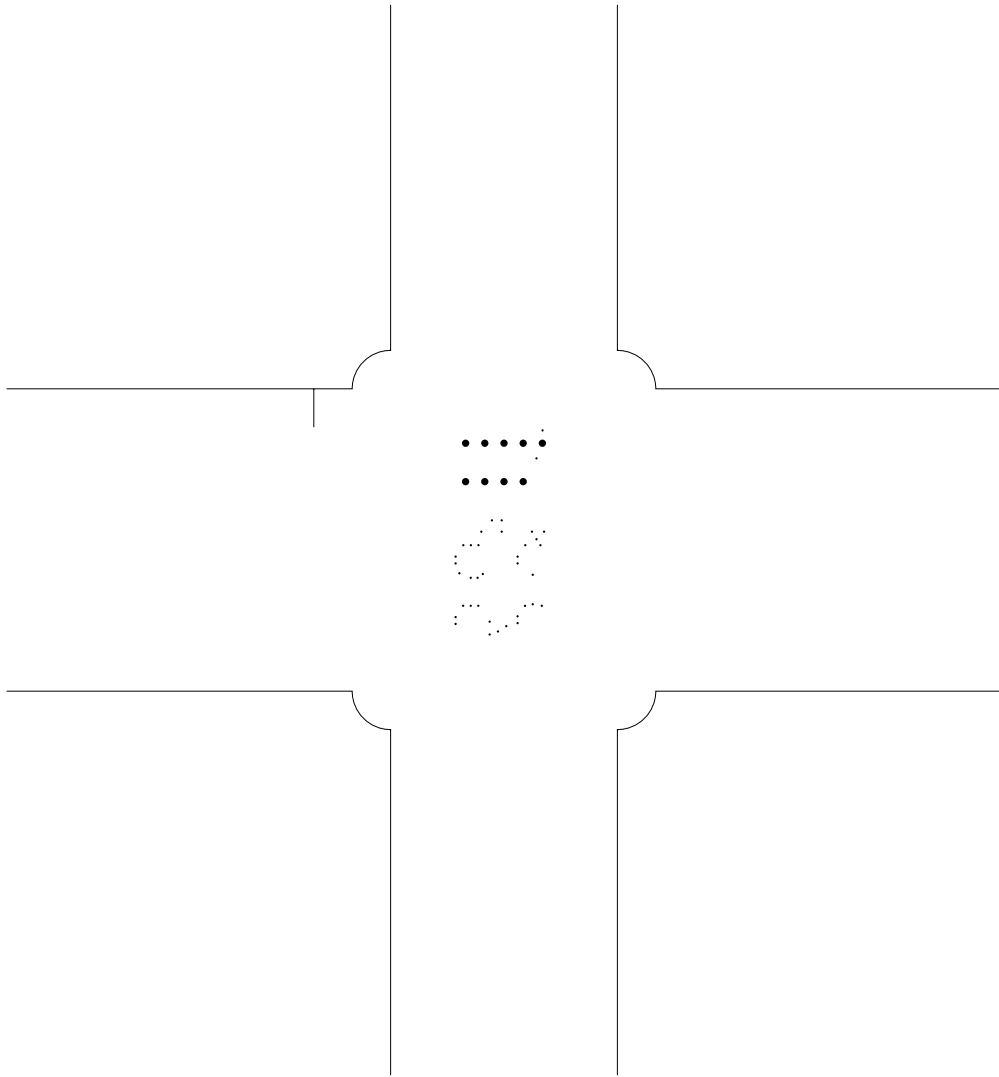
1. Table of Contents (This Page)
Created on Tue Apr 14 21:31:54 2020

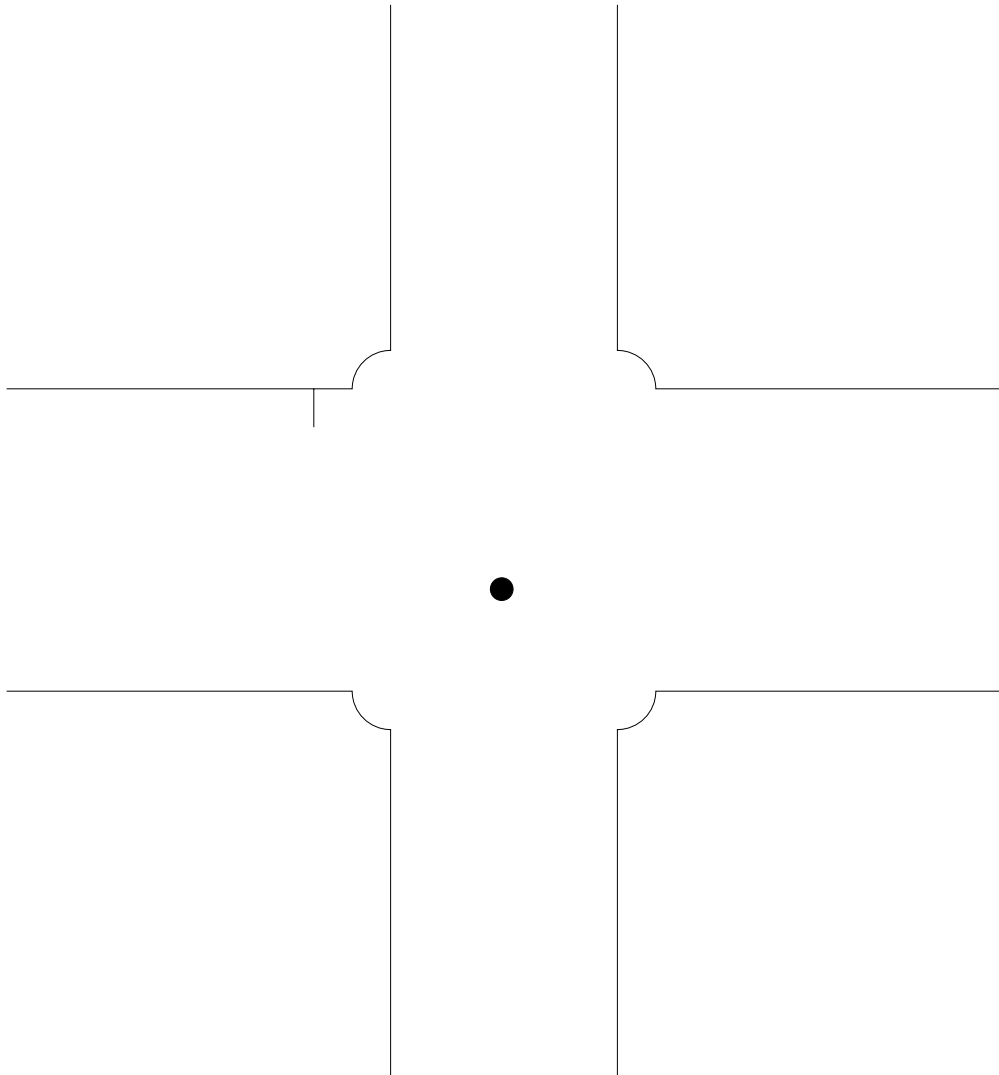
2. top
3. bottom
4. outline
5. plated-drill
6. unplated-drill
7. componentmask
8. soldermask
9. topsilk
10. bottomsilk
11. toppaste
12. bottompaste
13. topassembly
14. bottomassembly
15. fab

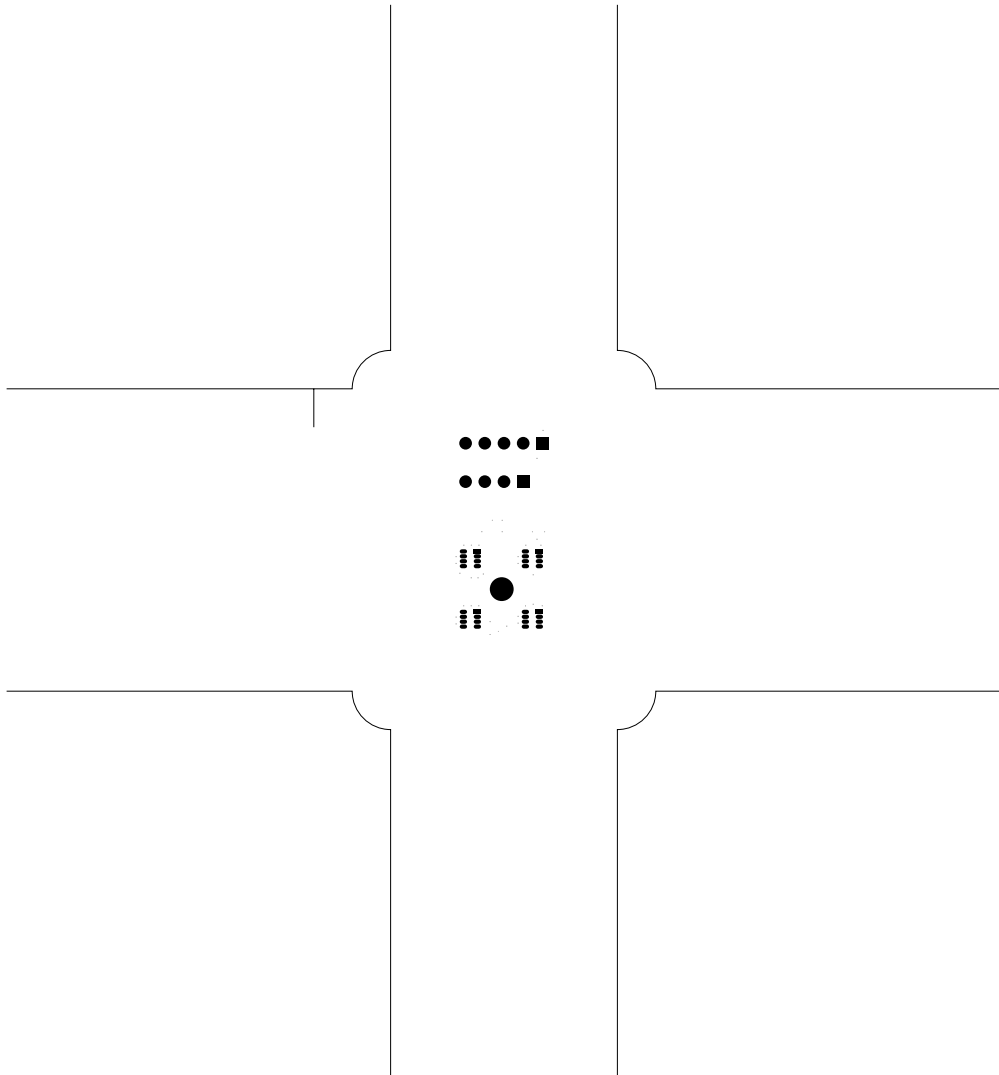


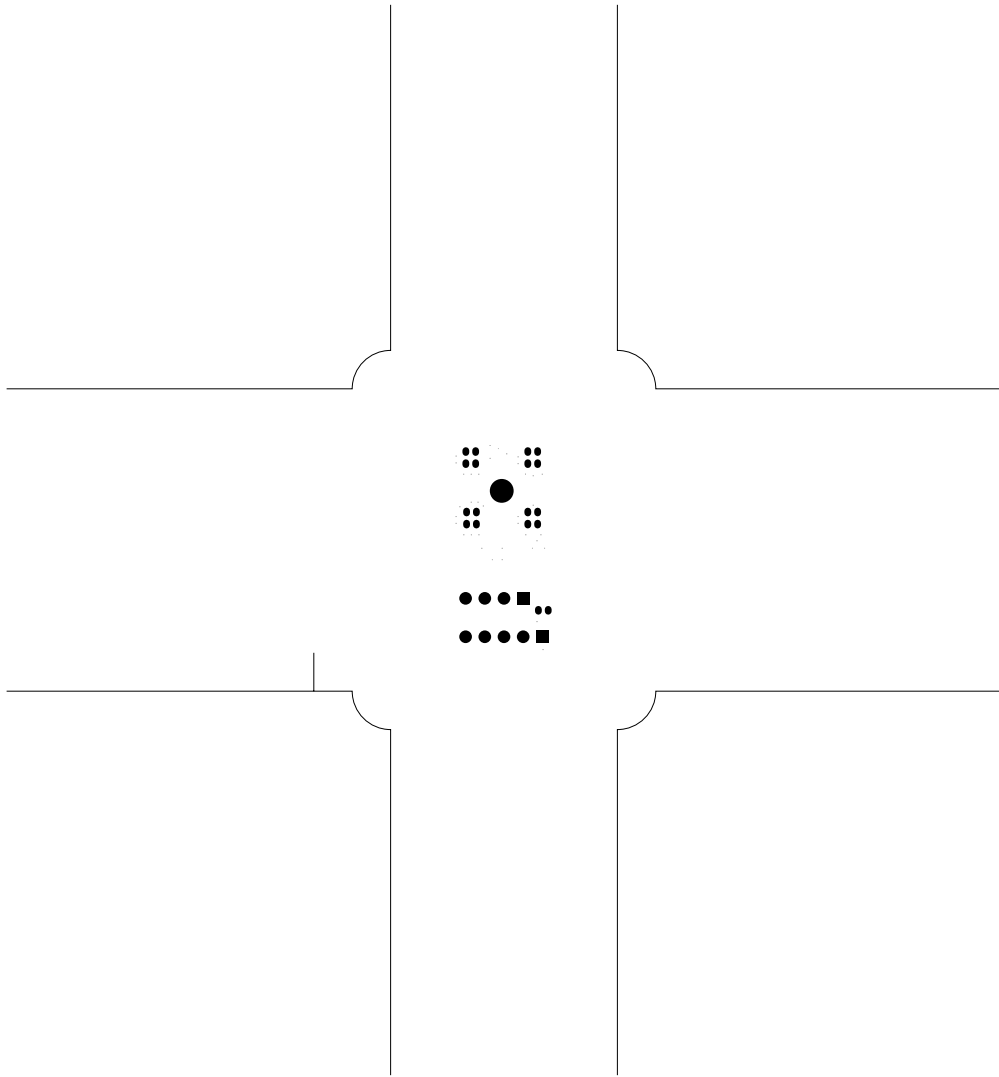


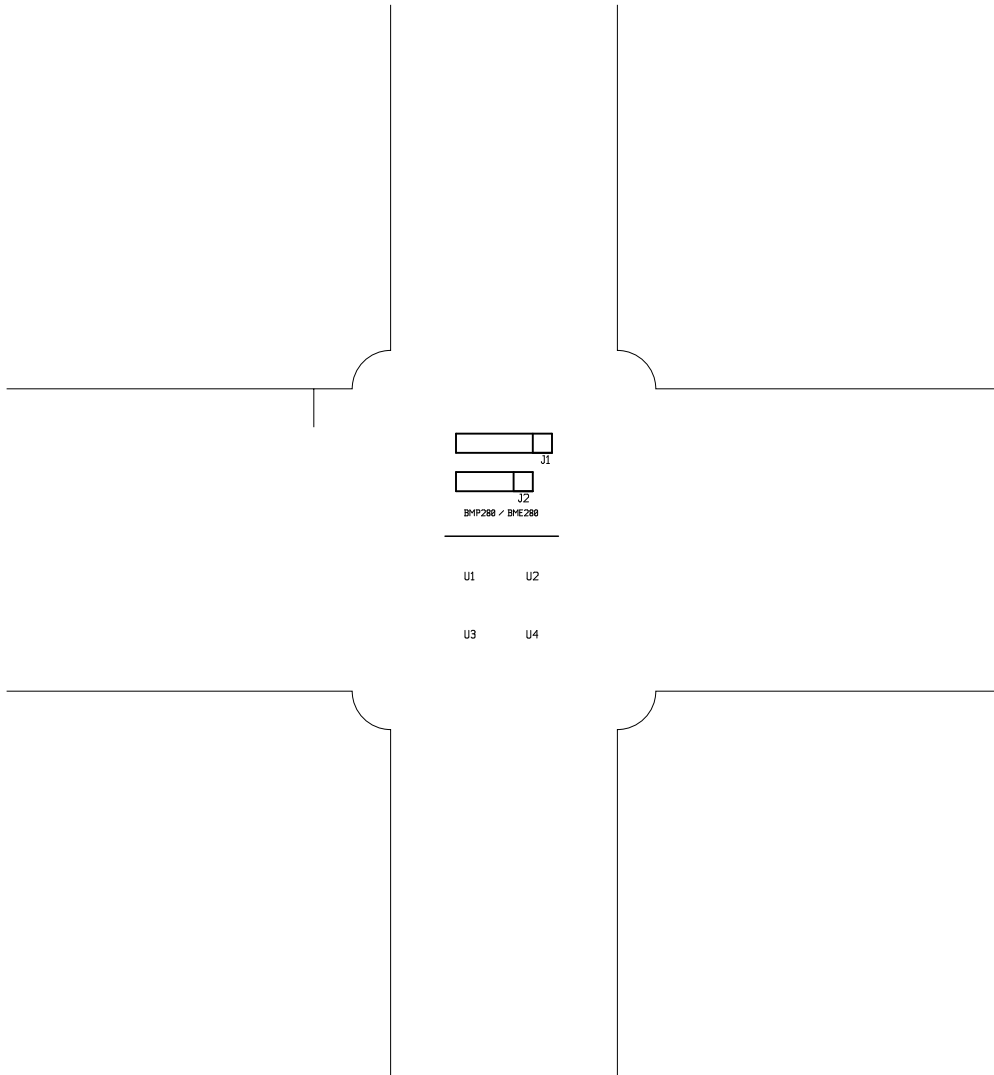


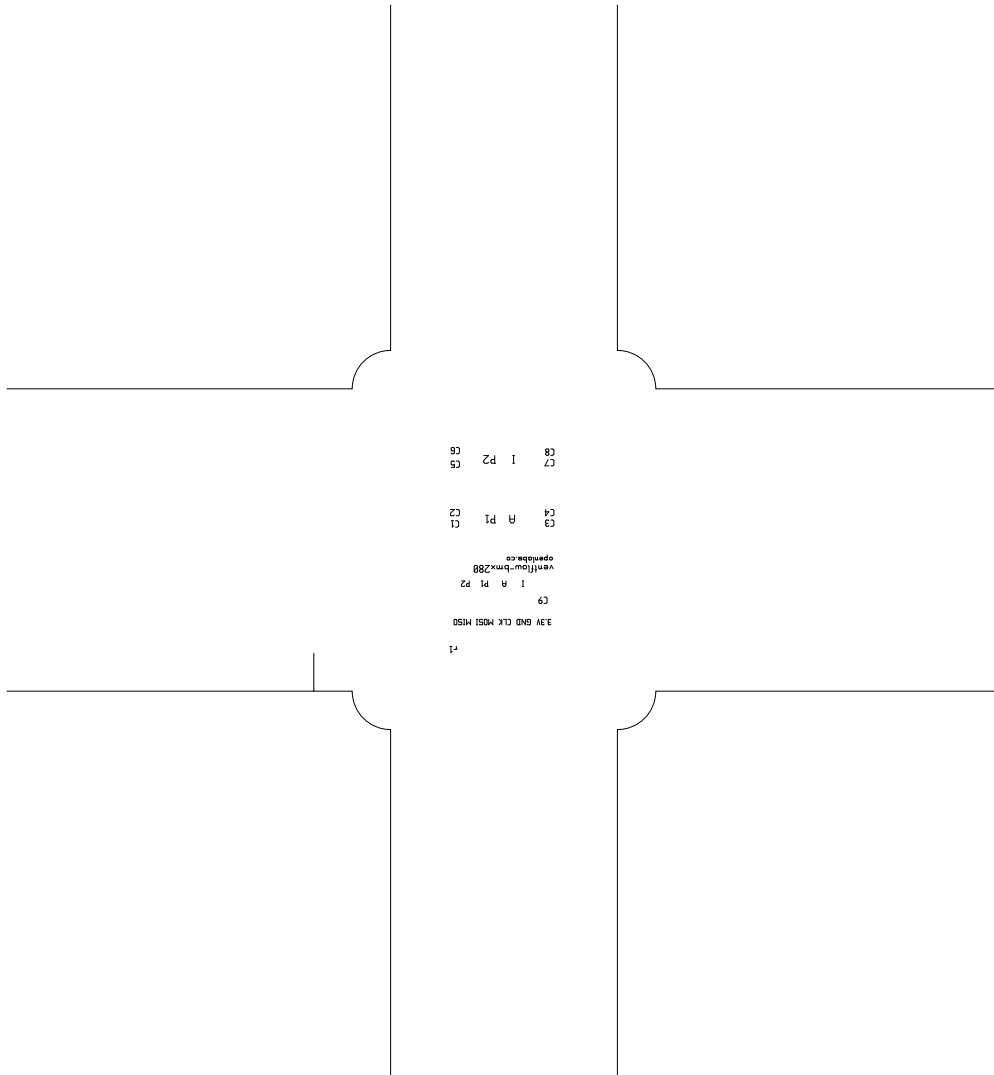


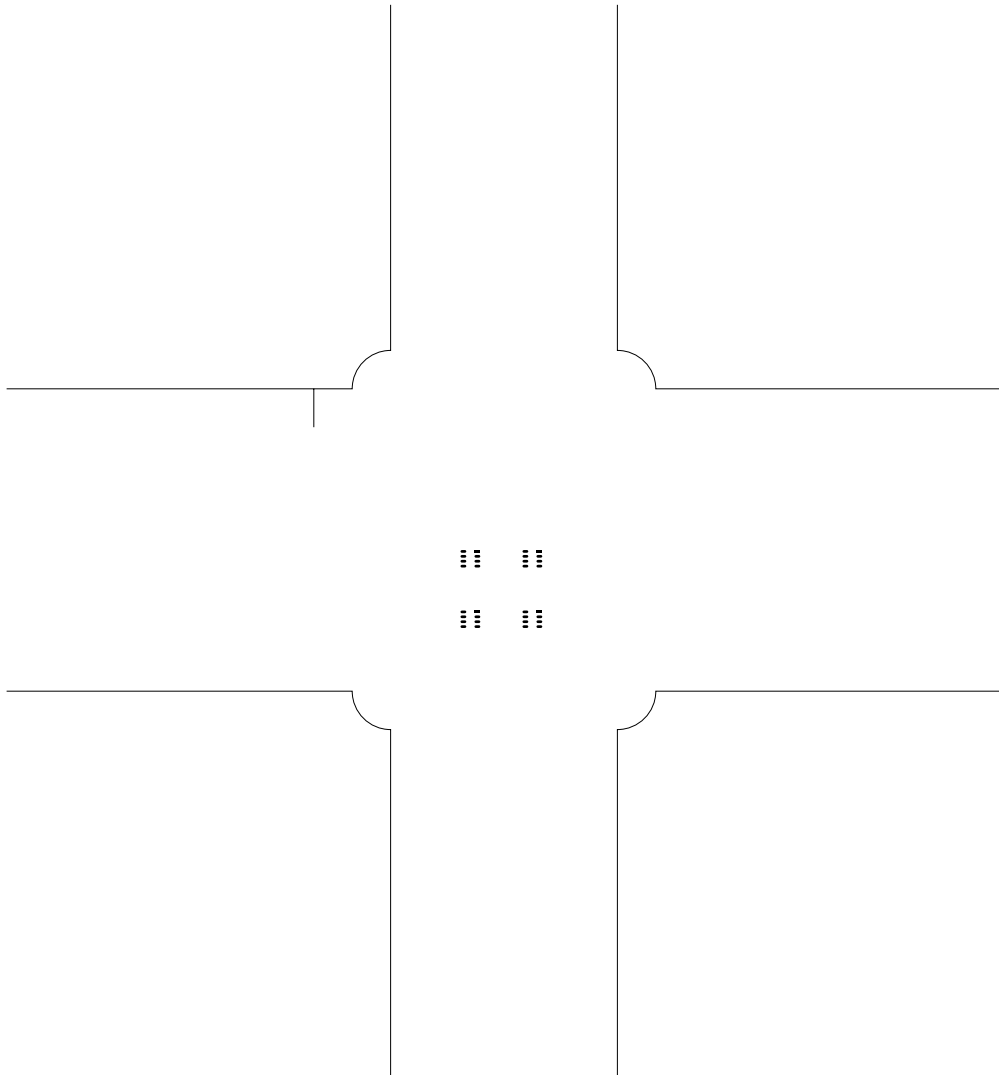


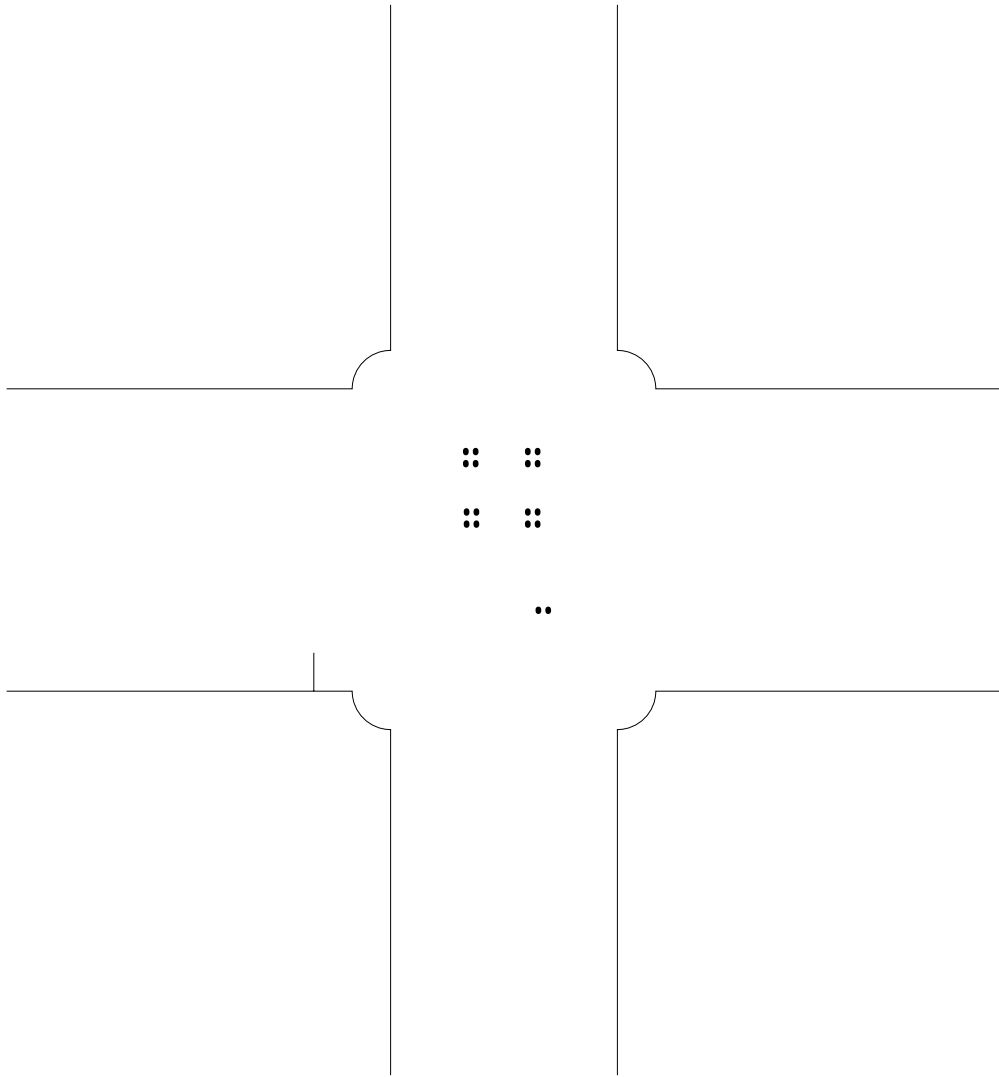


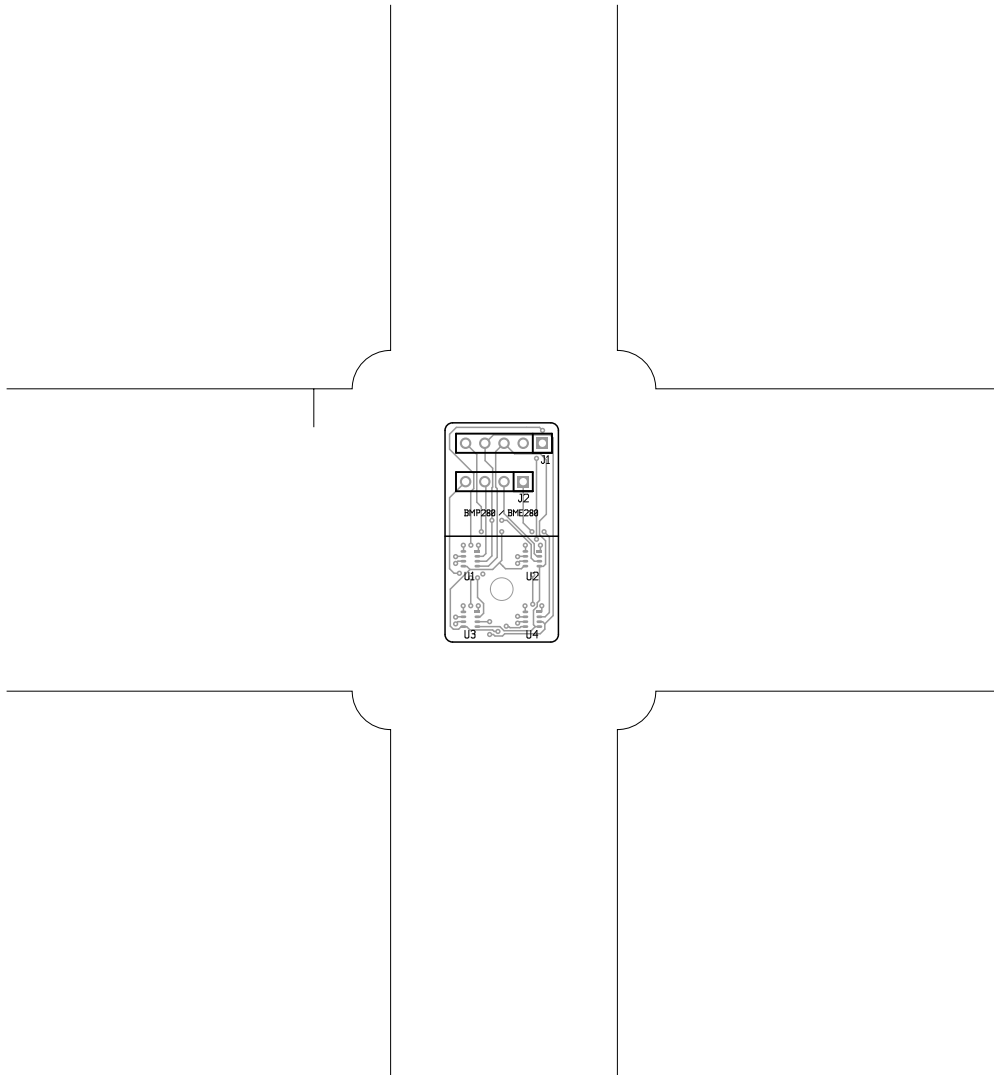


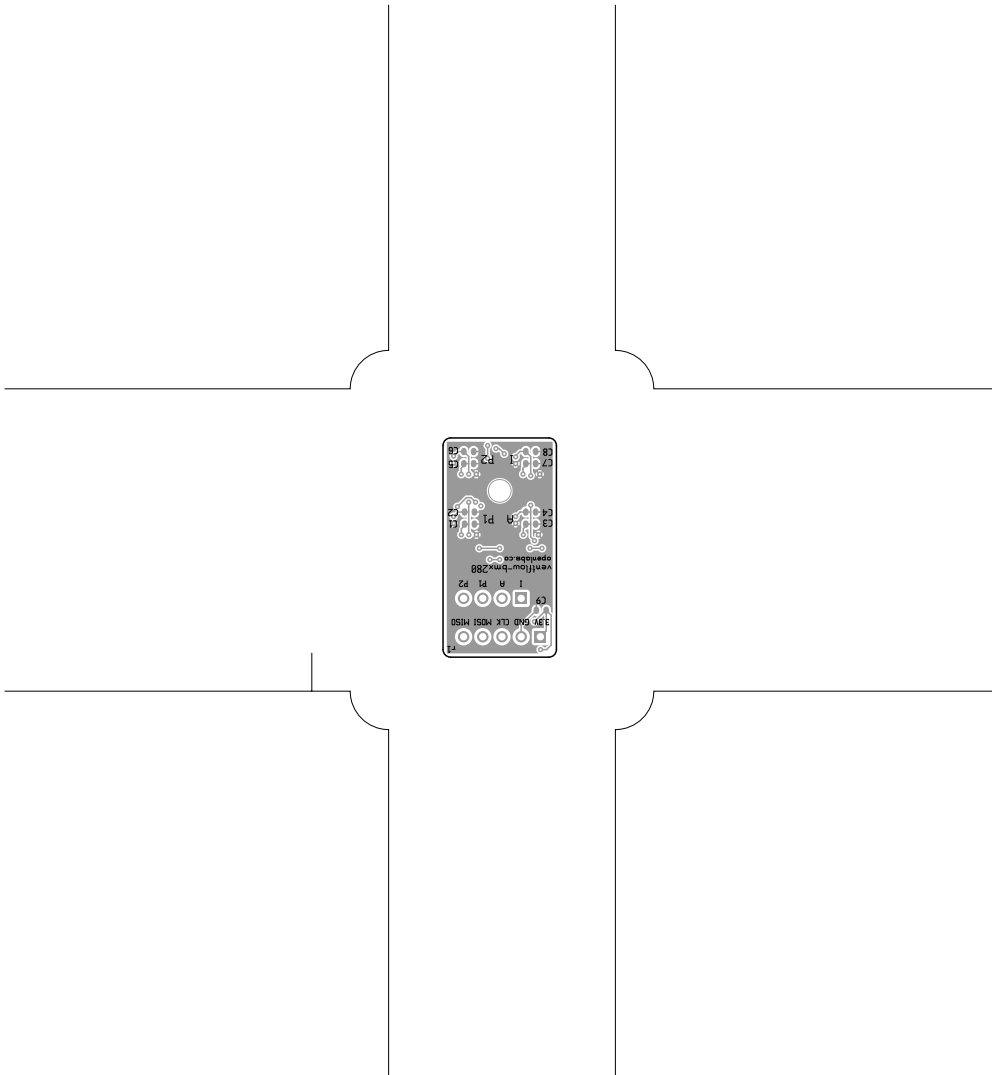












ventflow-bmx280, bottomassembly (mirrored), scale = 1:1.000
ventflow-bmx280.pcb

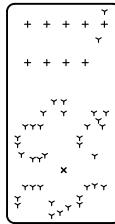
There are 3 different drill sizes used in this layout, 47 holes total

Symbol	Diam. (Inch)	Count	Plated?
γ	0.012	37	YES
+	0.038	9	YES
x	0.118	1	NO

Title: ventflow-bmx280 - Fabrication Drawing

Author:

Date: Wed Apr 15 02:31:54 2020 UTC



Board outline is the centerline of this path