

1. Table of Contents (This Page)
Created on Tue Apr 9 01:23:44 2019

2. bottomsilk

3. top

4. bottom

5. topmask

6. bottommask

7. topsilk

8. plated-drill

9. toppaste

10. bottompaste

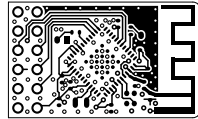
11. outline
outline

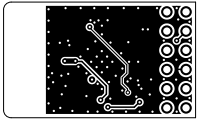
12. topassembly

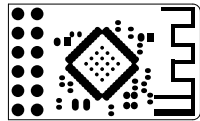
13. bottomassembly

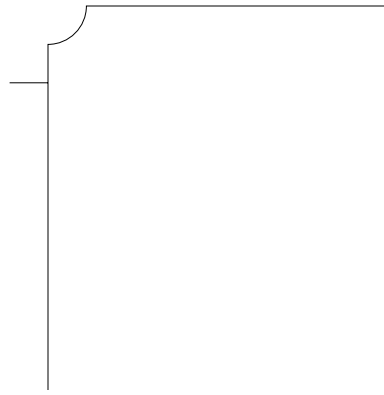
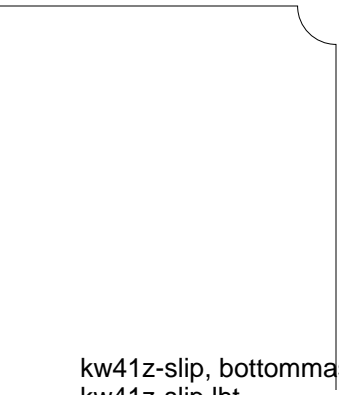
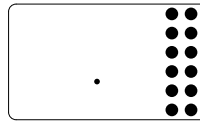
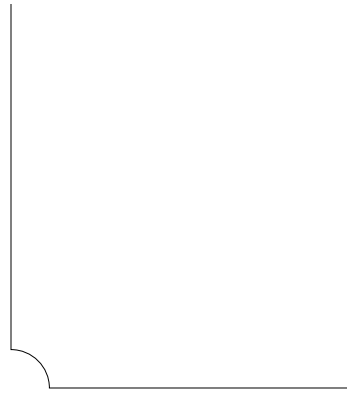
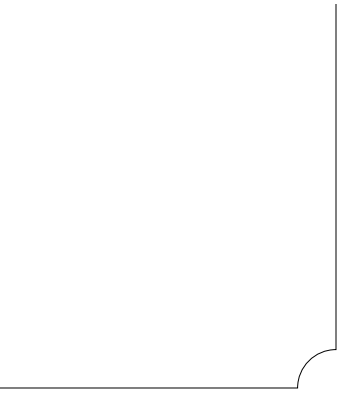
14. fab

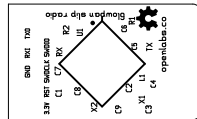


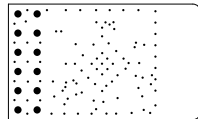


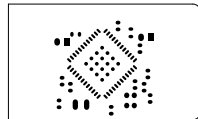


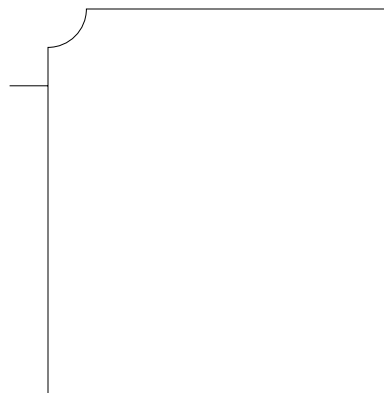
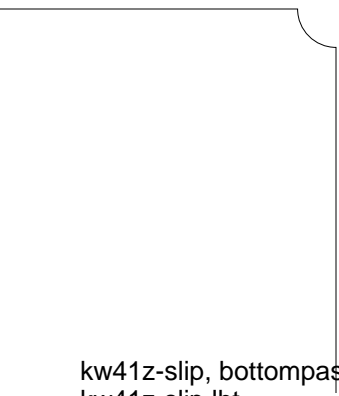
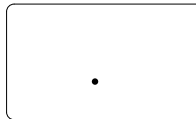
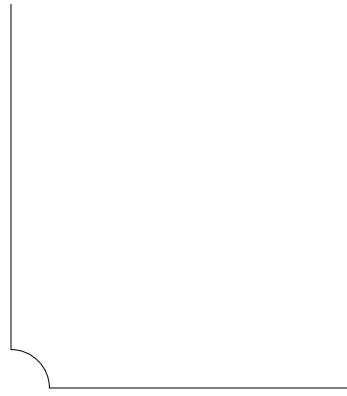
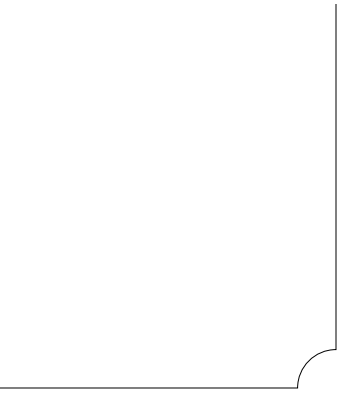


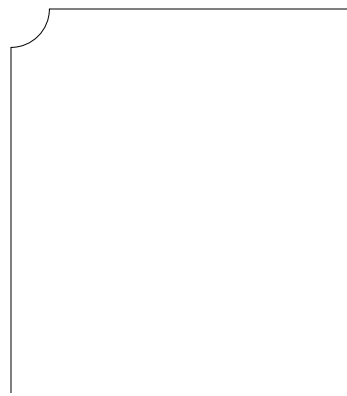
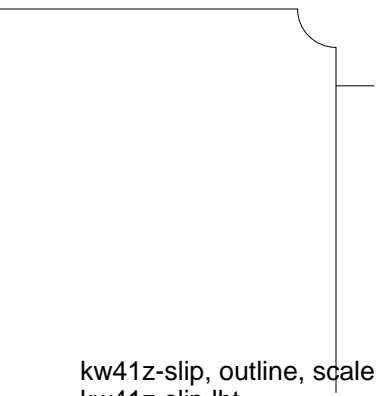
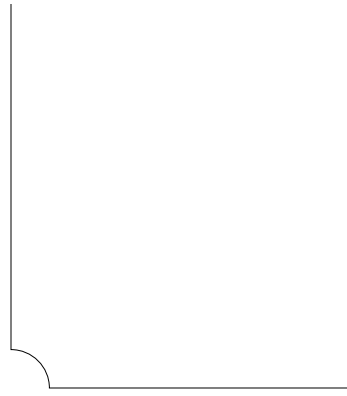
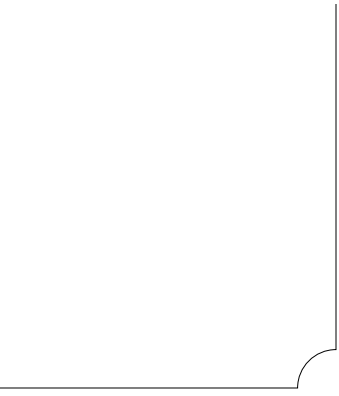


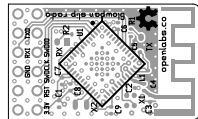


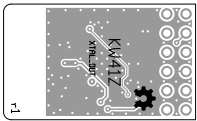








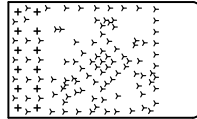




There are 2 different drill sizes used in this layout, 113 holes total

Symbol	Diam. (mm)	Count	Plated?
γ	0.30	101	YES
+	0.97	12	YES

Title: kw41z-slip - Fabrication Drawing
Author: Thomas Stilwell
Date: 2019-04-09 08:23:44 UTC



Board outline is the centerline of this path